



GP GIRARD-PERREGAUX



HOME SUBSCRIBE WATCH BRANDS FROM THE SOURCE ON LOCATION LEADING WATCH RETAILERS EVENTS GALLERIES

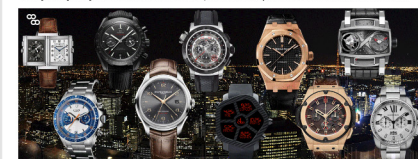


**TOP 10 WATCHES TO WEAR FROM DAY TO NIGHT**  
 JULY 16, 2013 @ 10:31 AM AUTHOR: IAN LARSEN | CATEGORY: NEWS, ONLINE EXCLUSIVE, PEOPLE & PLACES

<< Return to Previous Page [Tweet](#) (10) [Like](#) (206) [Share](#) [Digg](#)

iW Headquarters is often a deserted place, as many of us are jet setting and pounding the pavement in major watch markets around the world to meet with watchmakers and brands. Often times, we find ourselves with such a tight schedule, there is rarely time to change after the sun sets. Such a schedule permits for no mistakes in choosing the right watch to transition from the boardroom to the taproom. Take a look at Team iW's selection of timepieces ready for a day at the office or dinner and drinks.

*-Brought to you by iW Web Editor Kate Lawler, with the aid of Editorial Assistant Matthew Klahre*



\* Full interactive features on various formats available here.



*Audemars Piguet*  
ROYAL OAK SELFWINDING

**Audemars Piguet Royal Oak Selfwinding**  
 The Royal Oak Selfwinding from Audemars Piguet features a 41mm case in pink gold that houses the manufacture caliber 3120 movement. The dial is decorated with a "Grande Tapisserie" pattern, pink gold applied hour markers and Royal Oak hands. The case is outfitted with a hand-stitched large square-scale crocodile strap with pink gold AP folding clasp.



*Baume & Mercier*  
CLIFTON 10111

**Baume & Mercier Clifton - 10111**  
 Inspired by a historic Baume & Mercier timepiece dating back to the 1950s, this timepiece from the Clifton collection features a 43mm steel case, water resistant up to 30 meters. The sun satin-finished dial displays a second time zone around its perimeter and contains a date aperture at three o'clock. The watch is completed with a red brown alligator strap closed by an adjustable triple folding buckle with security push pieces.



*Carl F. Bucherer*  
PATRAVI TRAVELTEC FOURX

**Carl F. Bucherer Patravi TravelTec FourX**  
 The Patravi TravelTec FourX features a 46.6mm palladium case with a ceramic bezel, water resistant to 50 meters. In addition to tracking three time zones, the watch includes a chronograph complication powered by the chronometer-certified automatic Caliber CFB 1901.1 with a power reserve of 42 hours. The watch is finished with a rubber strap and pin buckle in titanium.



*Cartier*  
CALIBRE DE CARTIER CHRONOGRAPH

**Cartier Calibre de Cartier Chronograph**  
 This model comes complete with an in-house 1904-CH MC movement decorated with traditional Cotes de Geneve. Energy consumption by the chronograph is minimized through the use of a vertical coupling system fitted to the movement. The three-date aperture and prominent crown guard designs from the time-only Calibre de Cartier have carried over to this iteration. The 42mm case is available in rose gold or steel, with a matching bracelet or leather strap.



*Hublot*  
KING POWER ARTURO FUENTE KING GOLD 48MM

**Hublot King Power Arturo Fuente King Gold 48mm**  
 The King Power Arturo Fuente King Gold 48mm uses the HUB 100 self-winding chronograph movement. The satin-finished case is gold with black rubber and is mounted on a black rubber and brown hornback crocodile strap with white stitching. The multilayered matte brown dial features satin-finished gold plated appliques with black luminescent.



*Jacob & Co.*  
GHOST

**Jacob&Co. Ghost**  
 The 47mm Ghost from Jacob&Co. features a pentagon-shaped case in stainless steel with black PVD finishing. The black carbon fiber bezel is interchangeable with various PVD stainless steel and diamond options from the collection. The LCD dial displays the time in multiple timezones in red, orange and white, among other colors. A precision quartz movement powers the Ghost's functions with a GPS system for time and date setting. The watch is mounted on a vulcanized rubber strap.



*Jaeger-LeCoultre*  
REVERSO DUO

**Jaeger-LeCoultre Reverso Duo**  
 With the flip of the dial, this timepiece allows an instant end-of-day update. The hand wound Caliber 864/1 movement powers the front functions of hours, minutes and seconds, and the back functions including second time-zone and a 24-hour display. The front of dial is silvered guilloché with black transferred numerals, ideal for daywear while the back dial is black guilloché with luminescent transferred numerals- perfect for moonlight occasions.



*Omega*  
SPEEDMASTER "DARK SIDE OF THE MOON"

**Omega Speedmaster "Dark Side of the Moon"**  
 Both sleek and sporty, this model features a black zirconium oxide ceramic dial in a matching 44.25mm case. The two blackened subdials are made more legible in the placement of the 12-hour and 60-minute counters on the same sundial at three o'clock. Adding a touch of classic Speedmaster design, is the tachymeter scale located on the bezel as well as the two polished ceramic chronograph control pushers.



*Romain Jerome*  
MOON ORBITER

**Romain Jerome Moon Orbiter**  
 Romaine Jerome's Moon Orbiter is highlighted by a flying tourbillon with three-dimensional architecture situated at nine o'clock. The 49mm case containing steel elements from Apollo 11 is mounted on pneumatic cylinders to ensure a comfortable fit on the wrist. Hours and minutes are displayed on an off-center counter on the right. The 42-hour power reserve is measured by a lacquered red cursor on a separate subdial positioned between the lugs at six o'clock.



*Tudor*  
HERITAGE CHRONO BLUE

**Tudor Heritage Chrono Blue**  
 Reinterpreted this year from the 1973 original, this model contains three-dimensional luminescent hour markers with two beveled metallic edges, optimizing legibility in the evening and catching eyes during the day. The case is 42mm in diameter, stainless steel, with a self-winding mechanical Tudor Caliber 2892 movement.

**Related Articles**

The Top 12 of 2012	Top 10 Watches to Get Your Mom for Mother's Day	Top 10 Watches that Dive to the Deepest Depths	Ralph Lauren Joins The Foundation de la Haute Horlogerie	Top 10 Watches Under \$1,000

Facebook social plugin

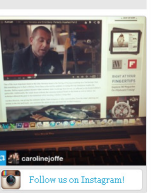
**SIGN UP TO RECEIVE iW ALERTS**  
 - SIGN UP NOW -

**iW**

SUBSCRIBE FOR ONE FULL YEAR & RECEIVE

**2**

**FREE ISSUES**



**Tweets**

**iW Magazine** @iWMagazine  
 #freepost from carolinejoffe with reposts! Don't miss iW's exclusive #interview with @ohnnarratos and...  
[instagram.com/pfaEwFs\\_JJ](#)

**iW Magazine** @iWMagazine  
 iW Magazine Watch of the Day - @fatek\_Philippe Ref. 50047 @OnlyWatch2013  
[iwmagazine.com/new\\_watches/pic\\_twitter.com/24q8C0k00](#)

Tweet to @iWMagazine